



## Galbreath U5-OR-174-RM

60,000 lbs Capacity Roll-Off Hoist (Outside Rail)

### 2018 International HX620 6x4

#### Body Specifications:

#### Engine

Cummins X15 485 HP @ 1950 RPM  
Torque 1,650 FT/LB  
(3) 12V Group 31 Batteries  
18.7 CFM Air Compressor  
W/ Internal Safety Valve  
Cummins - Interbrake Exhaust  
120V Block Heater

#### Transmission

Allison 4500 RDS  
Automatic  
W/ PTO Provision

#### Front Axle

Meritor MFS-20-133A 20K Wide Track  
FAWR: 20,000 lbs.  
Tires: 315/80R22.5 20 Ply  
Wheels: Aluminum

#### Front Suspension

20,000 lb. Taper Leaf Suspension  
w/ Shock Absorbers

#### Rear Axle

Spicer D46-170Hp Tandem  
RAWR: 46,000 lbs.  
Diff. Lock/Driver Controlled  
4.10 Ratio  
Tires: 11R22.5 14 Ply  
Wheels: Steel

#### Rear Suspension

46,000 Lb. Hendrickson HMX460  
w/ 54" Axle Spacing

#### Frame

Clear Frame Rails (260" Wheelbase)  
C-Channel Inner Frame Reinforced  
12.50" x 3.750" x 0.500 Steel Frame  
Bumper Full Width, Formed Stainless  
Clad Aluminum, Bright Finish  
Tow Pin

#### Fuel Tanks

9.5 Gallon DEF Tank-LH Medium Duty  
100 Gallon Fuel Tank-LH  
26" Diameter, Aluminum

#### Air & Equipment

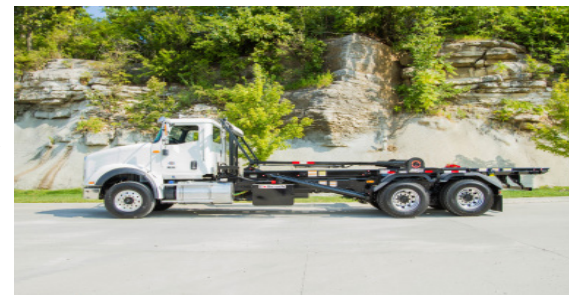
Air Brake Package  
Bendix ABS  
Reinforced Nylon, Fabric Braid,  
& Wire Braid Chassis Air Lines  
Fiber Braid Parking Brake Hose  
AD-9 Brake Line Air Dryer W/ Heater  
Steel Air Brake Reservoirs  
Pull Cable on Wet Tank  
Petcock Drain Valves on All Other  
Air Connections to EOF W/ Glad Hands  
7-Way Primary Receptacle  
Mounted End of Frame  
Trailer Hand Control Brake Valve  
BW Tractor Protection Valve

#### Unit Features

Conventional Cab - 3 Year Cab Warranty!  
Flat Roof Aluminum  
Air Cab Mounts  
Composite Hood - Tilt - Chrome Grill  
(2) Air Horns - Chrome  
Single Electric Horn  
Dual West Coast Heated Mirrors  
Bright Finish  
Power Door Locks and Windows  
(5) Amber Marker Lights LED  
Vinyl Interior  
Heater, Defroster, A.C.  
Body ING, PTO Accomodation for (3) Latched Rocker  
Switches, (1) PTO Switch, (2) Generic Switches to Control  
(3) 30 amp relays, with Programmable Interlocks  
Hi-Back Air Ride Driver Seat Vinyl N2000  
Intermediate Back Non Suspension N2000  
2 Cup Holders  
Adjustable Tilt/Tele. Steering Column  
Driver Instrument Panel  
Integral Digital Voltage Display  
97 DB Backup Alarm  
Electronic Cruise Control  
AM/FM Radio w/ Front/Rear Aux. Inputs  
White Paint

- For Use with Container Sizes 18'-22'
- 60,000 lbs Capacity
- 192" Cab to Axle Dimension
- Outside Rail
- Inside Air Controls
- Hot Shift PTO
- Tandem Poly Fenders
- Hoist Up Alarm
- Back Up Alarm
- Tool Box 48"
- Recessed LED Lights
- Air Actuated ICC Bumper
- Ratchet Style Rear Hold Downs
- Pioneer/Load King 4500SARG

#### Tarper



Sale Price: \$179,500

FET Included

Ex Works: Kansas City, MO

Subject to Availability

Pkg Price: MS5.25-H\_17 Expiration Date: 12-31-17

www.utility1source.com