

# STINGER 19-70



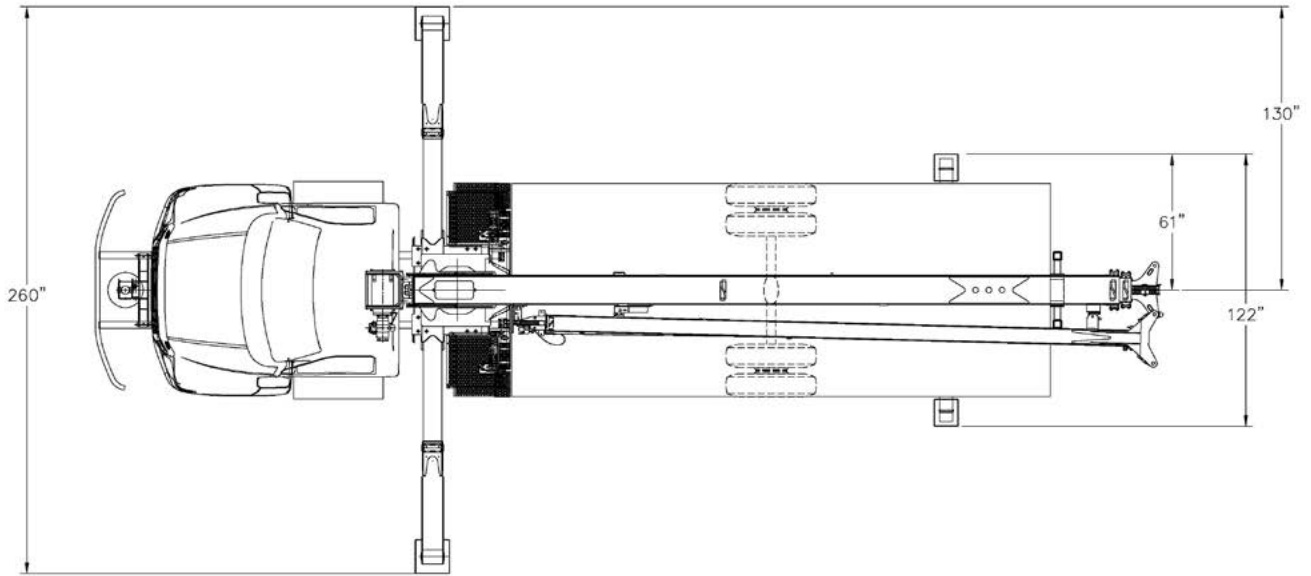
**Features: STINGER 19-70**

- 19 US t @ 5ft
- 70 ft maximum boom length
- 80 ft maximum tip height
- 24-40 ft optional jib
- 120 ft maximum tip height with 40 ft jib
- Electronic rated capacity indicator
- Quick reeving boom head

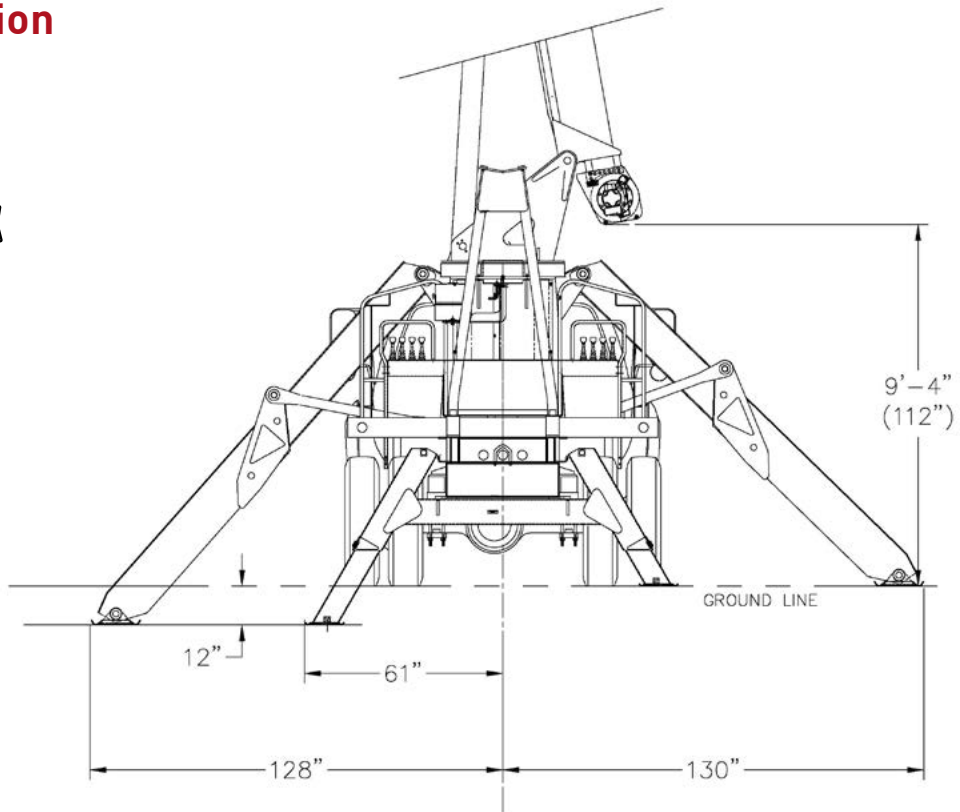
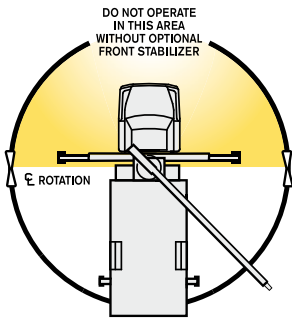
# DIMENSIONS

# STINGER 19-70

## Crane Dimensions



## Area of Operation

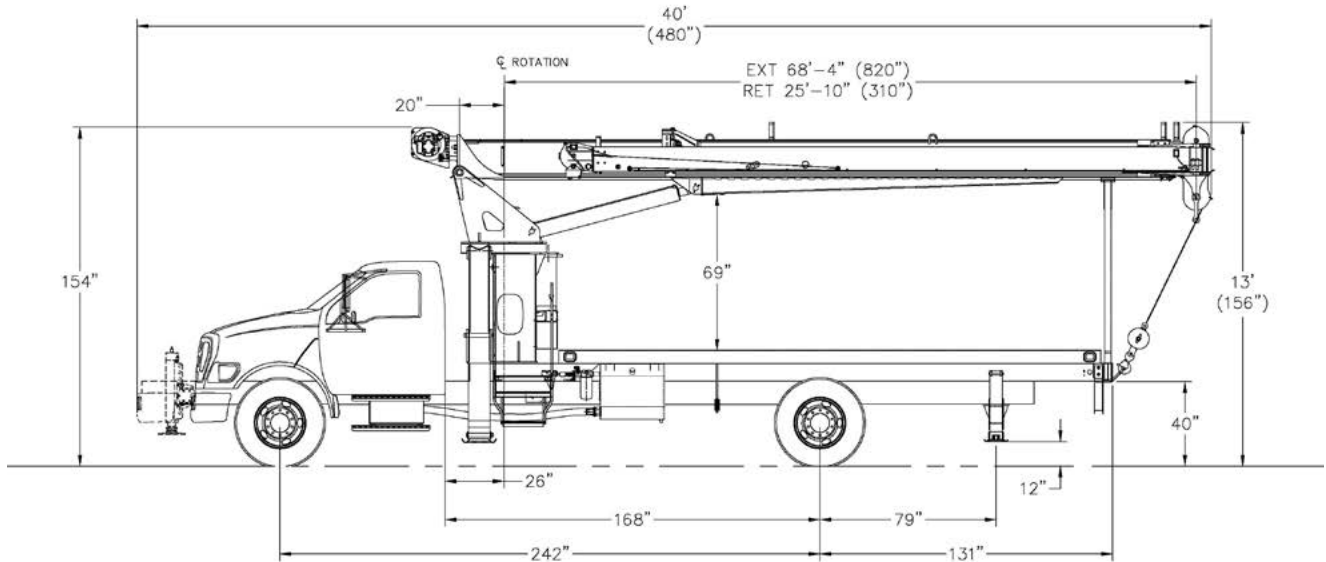


# DIMENSIONS

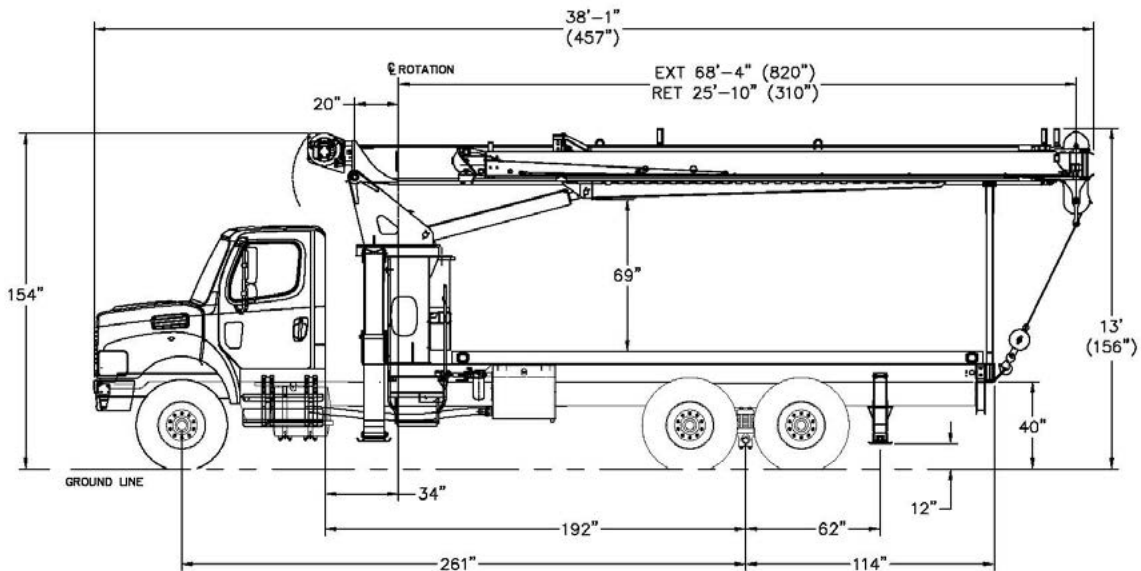
# STINGER 19-70

## Example Layout Drawings

### Single Axle Configuration



### Tandem Axle Configuration



## Mounting Specifications

### Chassis Recommendations

#### Single Axle

Gross vehicle weight rating	33,000 lb
Front axle weight rating	12,000 lb
Rear axle weight rating	21,000 lb
Frame section modulus	15.9 in <sup>3</sup>
Exhaust	Left side under cab with vertical tailpipe
Wheelbase	242 +/- 4 in
Cab to axle	168 +/- 4 in
Afterframe	100 +/- 4 in
RBM per frame rail	1,800,000 lb/in
Frame height (unloaded)	40 +/- 3 in

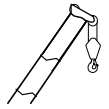
#### Tandem Axle

Gross vehicle weight rating	52,000 lb
Front axle weight rating	18,000 lb
Rear axle weight rating	34,000 lb
Frame section modulus	15.9 in <sup>3</sup>
Exhaust	Left side under cab with vertical tailpipe
Wheelbase	260 +/- 6 in
Cab to trunnion	192 +/- 6 in
Afterframe	114 +/- 4 in
RBM per frame rail	1,800,000 lb/in
Frame height (unloaded)	40 +/- 3 in

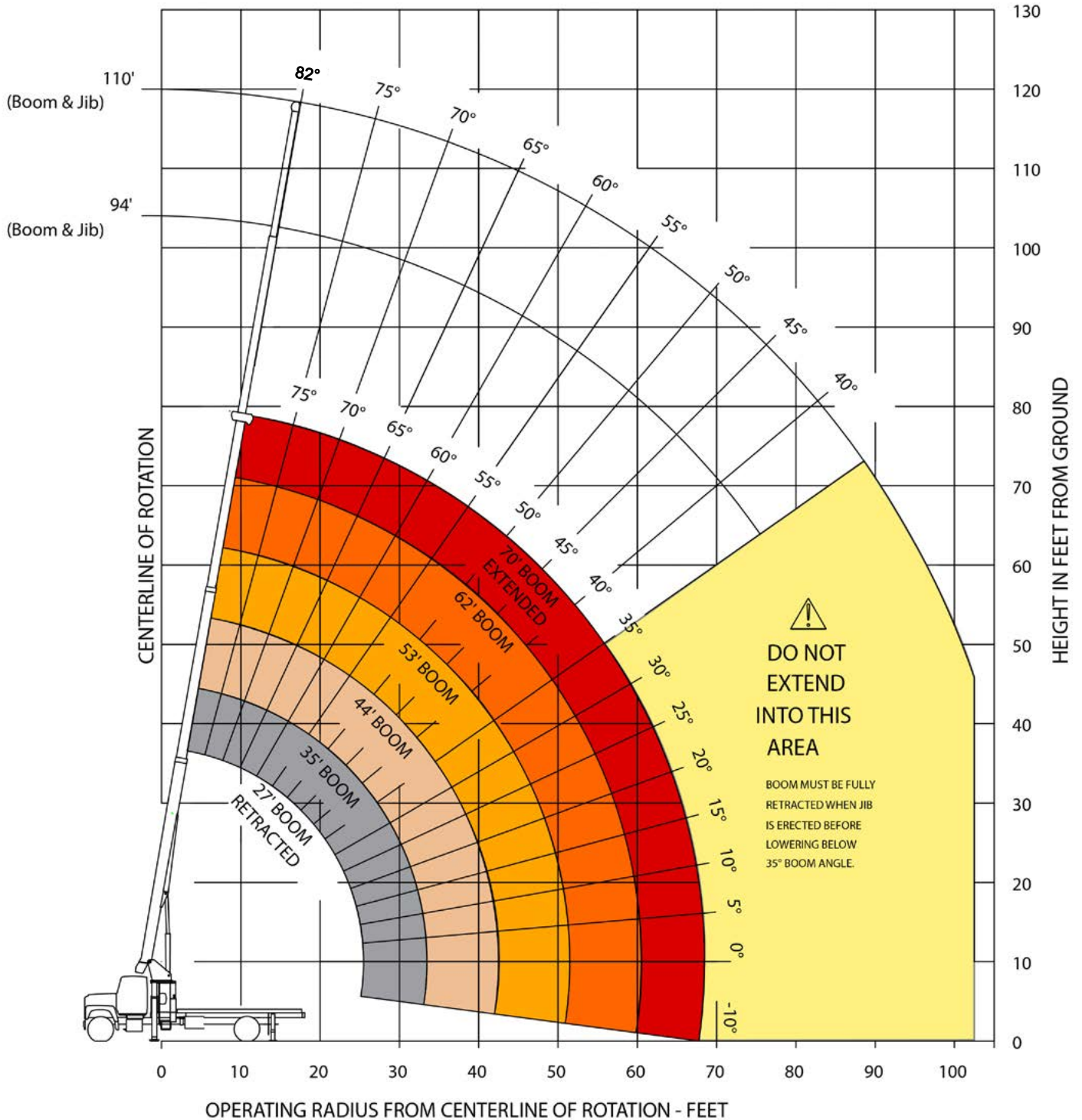
# RANGE DIAGRAM

Outriggers Fully Extended

# STINGER 19-70



### RANGE DIAGRAM

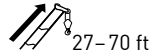


# LOAD CHARTS

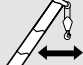

## Single Axle Configuration

### Outriggers Fully Extended

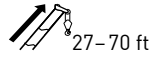
# STINGER 19-70



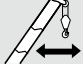

Standard ASME B30.5

	Boom Length						
	27	35	44	53	62	70	
ft	lb	lb	lb	lb	lb	lb	ft
5	38,000						5
8	26,400						8
10	22,200	21,200	20,500				10
12	19,300	18,400	17,700	17,200			12
15	16,200	15,400	14,700	14,300	13,900	12,000	15
20	12,600	12,100	11,600	11,100	10,800	10,500	20
25	9,200	9,700	9,500	9,100	8,800	8,600	25
30		6,700	7,100	7,200	7,300	7,200	30
35			5,200	5,400	5,500	5,600	35
40			4,000	4,200	4,300	4,400	40
45				3,300	3,400	3,500	45
50				2,600	2,700	2,800	50
55					2,200	2,300	55
60					1,800	1,900	60
65						1,500	65

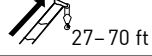
## Boom at 0°





Standard ASME B30.5

	Boom Length						
	27	35	44	53	62	70	
0	lb	lb	lb	lb	lb	lb	0
0	6,900	5,100	3,500	2,400	1,700	1,300	0

## With Jib, Retracted and Extended



Standard ASME B30.5

	Jib Capacities for All Boom Lengths										
	80°	75°	70°	65°	60°	55°	50°	45°	40°	35°	
ft	lb	lb	lb	lb	lb	lb	lb	lb	lb	lb	ft
24	3,900	3,600	3,200	2,500	2,100	1,900	1,700	1,400	1,100	900	24
40	2,200	2,100	2,000	1,900	1,500	1,300	1,100	900	800	600	40

## Notes to lifting capacity

Lifting capacities do not exceed 85% of tipping load. Weight of hook blocks and slings are part of the load, and are to be deducted from the capacity ratings. Consult operation manual for further details.

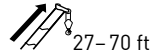
Note: Data published herein is intended as a guide only and shall not be construed to warrant applicability for lifting purposes. Crane operation is subject to the computer charts and operation manual both supplied with the crane.

# LOAD CHARTS

## Tandem Axle Configuration

### Outriggers Fully Extended

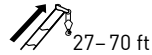
# STINGER 19-70



Standard ASME B30.5

ft	Boom Length						ft
	27 lb	35 lb	44 lb	53 lb	62 lb	70 lb	
5	38,000						5
8	26,400						8
10	22,200	21,200	20,500				10
12	19,300	18,400	17,700	17,200			12
15	16,200	15,400	14,700	14,300	13,900	12,000	15
20	12,600	12,100	11,600	11,100	10,800	10,500	20
25	9,200	9,900	9,500	9,100	8,800	8,600	25
30		8,000	8,000	7,700	7,400	7,200	30
35			6,800	6,600	6,400	6,200	35
40			5,400	5,700	5,600	5,400	40
45				4,600	4,800	4,800	45
50				3,800	3,900	3,900	50
55					3,200	3,300	55
60					2,600	2,800	60
65						2,400	65

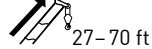
## Boom at 0°



Standard ASME B30.5

°	Boom Length						°
	27 lb	35 lb	44 lb	53 lb	62 lb	70 lb	
0	6,900	5,100	4,000	3,100	2,400	1,900	0

## With Jib, Retracted and Extended



Standard ASME B30.5

ft	Jib Capacities for All Boom Lengths										ft
	80° lb	75° lb	70° lb	65° lb	60° lb	55° lb	50° lb	45° lb	40° lb	35° lb	
24	3,900	3,600	3,200	2,500	2,100	1,900	1,700	1,500	1,400	1,300	24
40	2,200	2,100	2,000	1,900	1,500	1,300	1,100	900	800	700	40

## Notes to lifting capacity



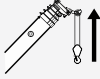


Lifting capacities do not exceed 85% of tipping load. Weight of hook blocks and slings are part of the load, and are to be deducted from the capacity ratings. Consult operation manual for further details.

Note: Data published herein is intended as a guide only and shall not be construed to warrant applicability for lifting purposes. Crane operation is subject to the computer charts and operation manual both supplied with the crane.



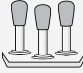
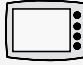
# TECHNICAL DESCRIPTION

## STINGER 19-70

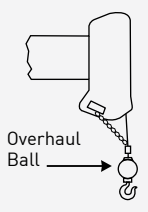
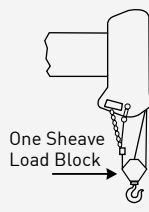
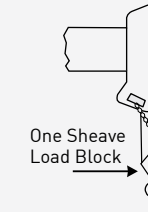
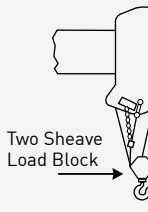

### Boom, Jib and Rotation

	Four-section full power fully synchronized telescopic keel boom Boom elevation angle range (min/max) Boom up/down time Boom extension/retraction time	-10° / 82° 25/16 seconds 61/29 seconds
	Boom length	70 ft
	Boom maximum tip height	80 ft
	Maximum tip height: With optional single stage 24 ft jib Maximum tip height: With optional two stage 24-40 ft jib	104 ft 120 ft
	370° non-continuous rotation or optional 360° continuous rotation	

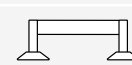
### Operator Controls and Operator Aid

	Hoist line pull (First layer)	11,100 lb
	Hoist line speed (Third layer)	137/223 ft/min
	Fully proportional	
	Electronic rated capacity indicator	

## Rope and Reeving

1 Part Line	2 Part Line	3 Part Line	4 Part Line
			
Overhaul Ball	One Sheave Load Block	One Sheave Load Block	Two Sheave Load Block
Loads Up To: 9,700 lbs * 6,800 lbs	Loads Up To: 19,400 lbs * 13,600 lbs	Loads Up To: 29,100 lbs * 20,400 lbs	Loads Up To: 38,000 lbs * 27,200 lbs
<p>Hoist Rope</p> <p>9/16" XIPS, IWRC preformed right regular lay with 34,000 lb minimum breaking strength</p> <p>* 9/16" rotation resistant (per ASME 30.5 or ASM A1023) with 34,000 minimum breaking strength</p>			
	Overhaul ball		6.25 US t
	1 Sheave block		15 US t
	2 Sheave block		25 US t

## Understructure

	Front: A-frame link-type To outer edge of pad	21 ft 8 in
	Rear: A-frame To outer edge of pad	10 ft 2 in

## Optional Features

- Single and two-stage jibs
- Multi-part load blocks
- Main winch with 2 speed motor
- 20 ft Wood or steel flatbed
- Radio remote controls
- Two-man basket
- Hoist drum tensioner
- Continuous rotation
- Oil cooler
- Single front bumper outrigger
- Tool box
- Inching control for hoist operation at rear of subframe, for one man hook ball stowage and deploy



# STINGER 19-70

[www.loadkingmfg.com](http://www.loadkingmfg.com)

